

## ILFRACOMBE LIFEBOAT TRAIL

### A ILFRACOMBE MUSEUM £

Based in the laundry building of what was once a grand hotel, the Museum's many fascinating collections include lifeboat artefacts and models.

*From the Museum, cross Wilder Road and walk up the road at the side of the amusement arcade.*

### B ILFRACOMBE LIBRARY

Pop into the Library to find all sorts of books about the seaside, and pick up a lifeboat-themed colouring sheet too.

*From the Library, continue up the hill to the High Street and then turn left down Fore Street.*

*The back of the Lifeboat Station is at the foot of the hill. Walk through the alleyway to the Harbour.*

### C LIFEBOAT STATION

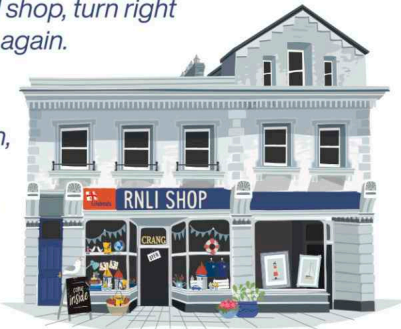
This houses two lifeboats, tractors to tow them when there are shouts, several model lifeboats and historic display boards. It is open to visitors 11am to 3pm from Easter until the end of October.

### D RNLI SHOP

Visit our shop to find lots of lifeboat related gifts, toys and books, with all proceeds used to save lives at sea.

*From the RNLI shop, turn right and then right again.*

*At the back of the Britannia pub is the access to the beach, and where you will find the old slipway.*



### E HISTORIC BRITANNIA OLD SLIPWAY

This is the site of one of the two slipways in use from 1886 to 1996 to launch lifeboats.

*With Verity directly ahead, walk up the Quay, where you will find the Old RNLI Boathouse (now The Aquarium), the Harbour Master's Office, and a path up to the Lighthouse / Chapel.*

### F HISTORIC RNLI BOATHOUSE / ILFRACOMBE AQUARIUM £

The Aquarium building was the lifeboat station between 1886 and 1996, when it was replaced by the current RNLI boathouse. Inside, you can see a display of how it once looked.

### G HARBOUR MASTER'S OFFICE

Ilfracombe has the largest harbour on the North Devon coast, which for centuries has provided a refuge for boats in distress.

### H ST. NICHOLAS CHAPEL / LIGHTHOUSE

St Nicholas is the patron saint of sailors, and the chapel in his name was built in the 14th century. The 15th century lighthouse that it now holds is said to be the oldest working one in the country.

*Return along the Quay and walk straight onto Capstone Drive. Turn right at the end of the row of houses and join the path behind Capstone Hill.*



### I VIEW OF COASTGUARD COTTAGES

From the walkway around Capstone Hill, it is possible to see the cottages that were built in 1933 for the Coastguard Crew and were used by them until recently. The buildings have a 180 degrees sea view. Look due east to spot them on the furthest cliff top.

See [visitilfracombe.co.uk](http://visitilfracombe.co.uk) for venue opening hours, entry prices and other details.

Scan to donate and help save lives at sea.



Leaflet funded by Ilfracombe Rotary Club  
[www.ilfracomberotary.org.uk](http://www.ilfracomberotary.org.uk)

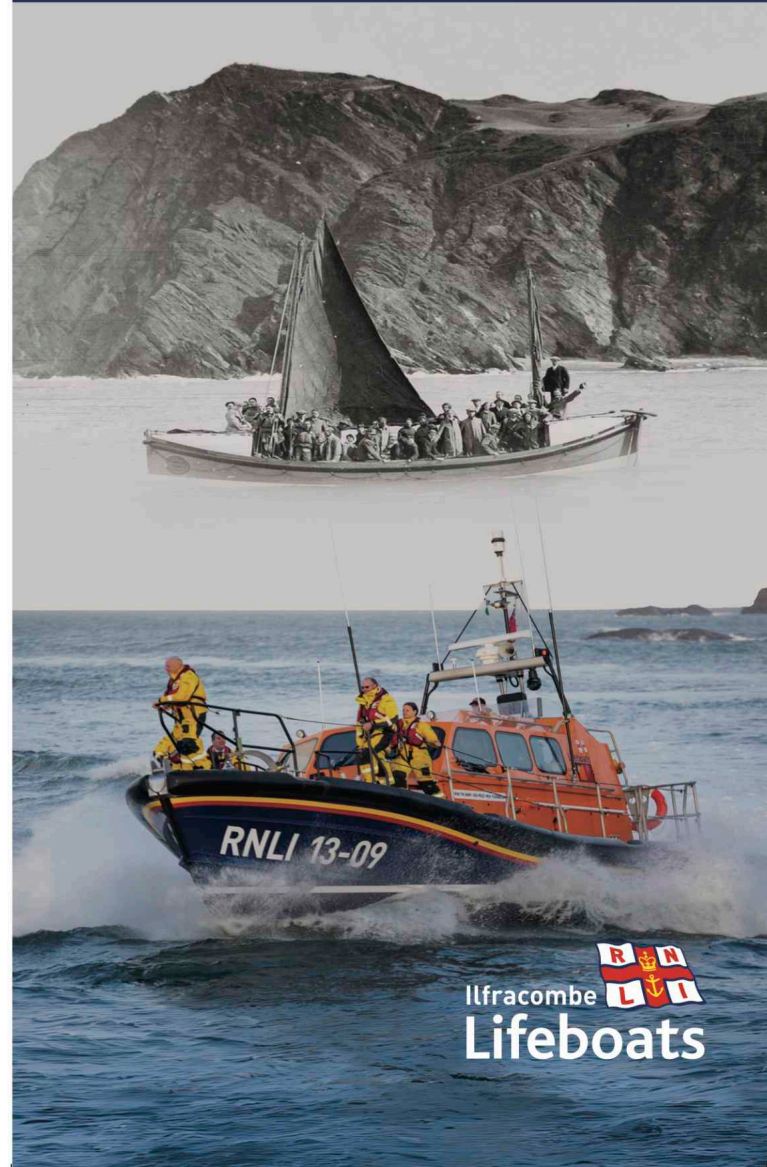
Rotary  
Club of Ilfracombe



WALK THE

# ILFRACOMBE LIFEBOAT TRAIL

THEN AND NOW - EXPLORE TWO CENTURIES OF THE LIFEBOAT SERVICE IN ILFRACOMBE



## ILFRACOMBE LIFEBOAT TRAIL

FOLLOW THE YELLOW TRAIL TO EXPLORE ILFRACOMBE'S LIFEBOAT HISTORY

### PLACES ALONG THE TRAIL

- THE LIFEBOAT TRAIL
- TOILETS
- P PARKING
- A THE MUSEUM
- F THE OLD BOATHOUSE
- B THE LIBRARY
- G THE HARBOUR MASTER'S OFFICE
- C RNLI LIFEBOAT STATION
- H ST. NICHOLAS CHAPEL
- D RNLI SHOP
- I COASTGUARD COTTAGES
- E THE OLD SLIPWAY

©ANGELA BARTLETT ILLUSTRATION